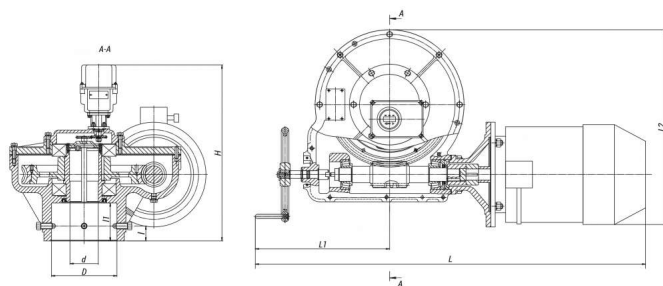


# 795-3-0-IV



Production according to TR  
28.14.20-006-15365247-2016

**The built-in electric actuators of series: 825, 876, 854, 792, 793, 794, 795, 797, 768, 798 are intended for the control of isolation and control fittings of TPS.**

**The electric actuators enable the following actions:**

- Closing, opening and stopping in any intermediate position of a locking device of fittings from the control board and in manual mode.
- Automatic switching-off of the electric motor:
  - when the locking or control device achieves the established boundary positions;
  - in extreme positions and in the intermediate position at the moment of stroke of the gate element when achieving the rotational torque on the driving shaft higher than the set one.
- Local and remote indication of the locking device position.
- Electric blocking of the electric motor in case of manual control of the fittings.
- Remote signaling.

## Specifications

Appli- cability to Fi- ttings	Maxi- mum Torqu- e on the Output Shaft of the Electr- ic Act- uator at ПБ =15%, N·m	Nomi- nal To- rque on the Output Shaft of the Electr- ic Act- uator at ПБ =25%, N·m	Rotati- onal Speed , rpm	Powe- r, kW	DN, mm	d, mm	L, mm	L1, mm	l, mm	l1, mm	b, mm	d+t, mm	Motor Model	D, mm	H1, mm	Weigh- t with- out El- ectric Actua- tor, kg	Torqu- e, N·m
Shut- off	630	0	20,9	1,7	0	105	1070	474	50	127	18	113,8	AMPC 80B4 Y3	220	460	168	0

**The electric actuators for gate valves** are designed for operation in a short-time mode, the frequency of starting per an hour is not more than 6 times with the cyclic duration factor (CDF) of not more than 15%. The turning-off of the electric actuators happens in case of complete closing/opening of gate valves, i.e. when the overcurrent relay is activated.

**The electric actuators for the control valves** are designed for operation in an intermittent revertive operation mode with the number of switchings up to 320 per hour and the cyclic duration factor (CDF) up to 25% in case when the load on the output shaft is equal to the nominal one. At the same time, the electric actuators shall enable operation within 1 hour in an intermittent revertive operation mode with the number of switchings up to 630 per hour and CDF up to 25% with subsequent repetition not more than in 3 hours.

**Page link:**

<https://en.bkzn.ru/catalog/elektroprivody-ooo-bkz/vstroennye-elektroprivody/795-e-0-iv/>