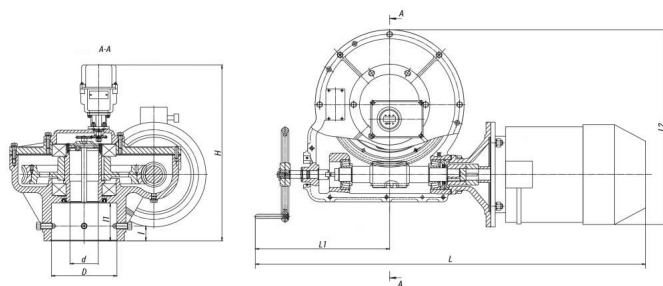


# 792-3P-0a-01



Production according to TR  
28.14.20-006-15365247-2016

**The built-in electric actuators of series: 825, 876, 854, 792, 793, 794, 795, 797, 768, 798 are intended for the control of isolation and control fittings of TPS.**

**The electric actuators enable the following actions:**

- Closing, opening and stopping in any intermediate position of a locking device of fittings from the control board and in manual mode.
- Automatic switching-off of the electric motor:
  - when the locking or control device achieves the established boundary positions;
  - in extreme positions and in the intermediate position at the moment of stroke of the gate element when achieving the rotational torque on the driving shaft higher than the set one.
- Local and remote indication of the locking device position.
- Electric blocking of the electric motor in case of manual control of the fittings.
- Remote signaling.

## Specifications

Appli cabili ty to Fittin gs	Maxi mum Torq ue on the O utput Shaft of the Electr ic Act uator at ПВ =15% , N·m	Nomi nal T orque on the O utput Shaft of the Electr ic Act uator at ПВ =25% , N·m	Rotat ional Spee d, rpm	Powe r, kW	DN, mm	d, mm	L, mm	L1, mm	L2, mm	l, mm	l1, mm	b, mm	d+t, mm	Moto r Mode l	H, mm	D, mm	Weig ht wit hout Electr ic Act uator, kg	Torq ue, N·m
Contr ol	0	300	20,3	1,32	0	28	864	386	435	25	67	8	31,3	AMPC 80A4 Y2	403	115	73,9	0

**The electric actuators for gate valves** are designed for operation in a short-time mode, the frequency of starting per an hour is not more than 6 times with the cyclic duration factor (CDF) of not more than 15%. The turning-off of the electric actuators happens in case of complete closing/opening of gate valves, i.e. when the overcurrent relay is activated.

**The electric actuators for the control valves** are designed for operation in an intermittent revertive operation mode with the number of switchings up to 320 per hour and the cyclic duration factor (CDF) up to 25% in case when the load on the output shaft is equal to the nominal one. At the same time, the electric actuators shall enable operation within 1 hour in an intermittent revertive operation mode with the number of switchings up to 630 per hour and CDF up to 25% with subsequent repetition not more than in 3 hours.

**Page link:**

<https://en.bkzn.ru/catalog/elektroprivody-ooo-bkz/vstroennye-elektroprivody/792-er-0a-01/>